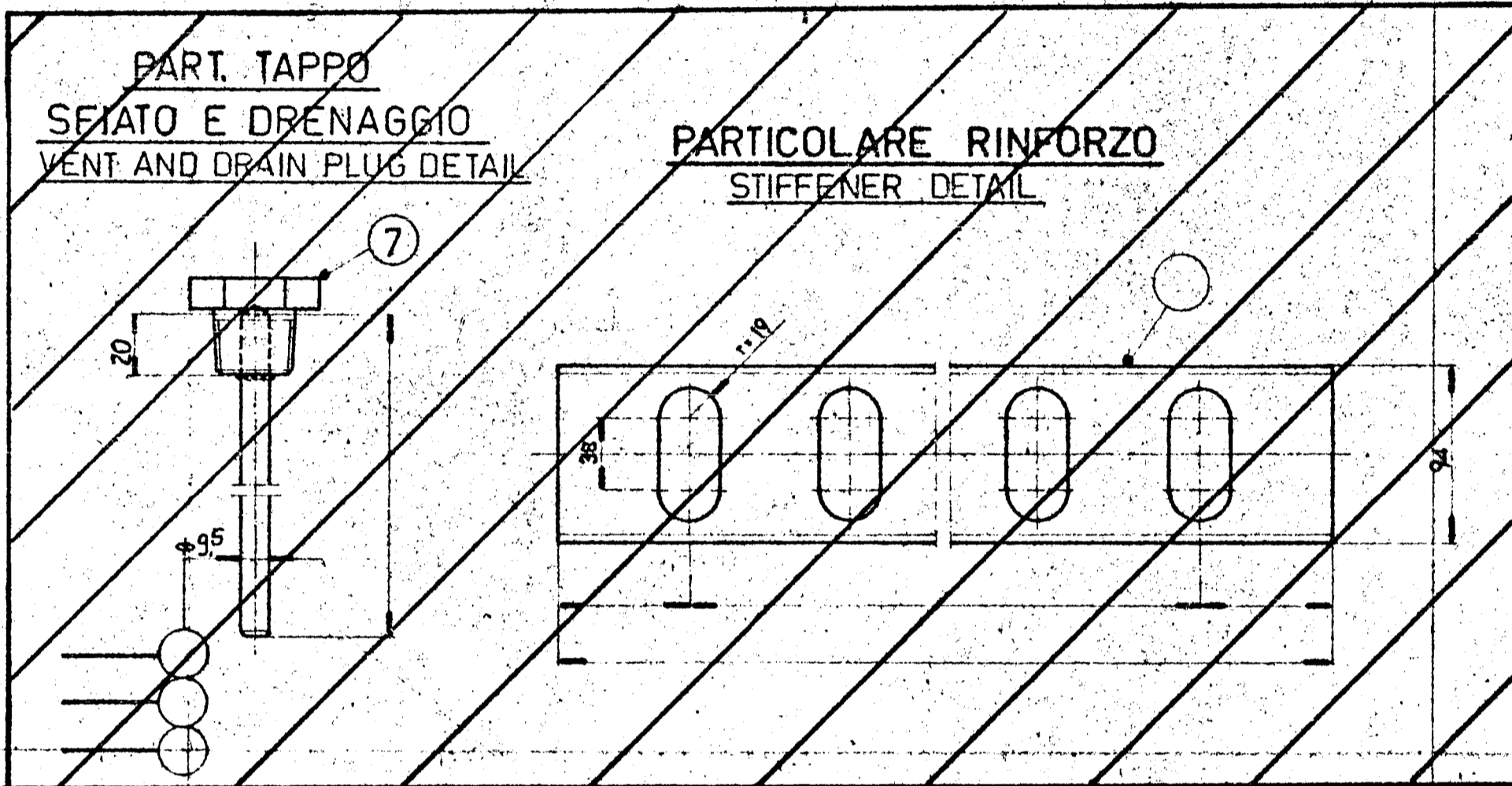
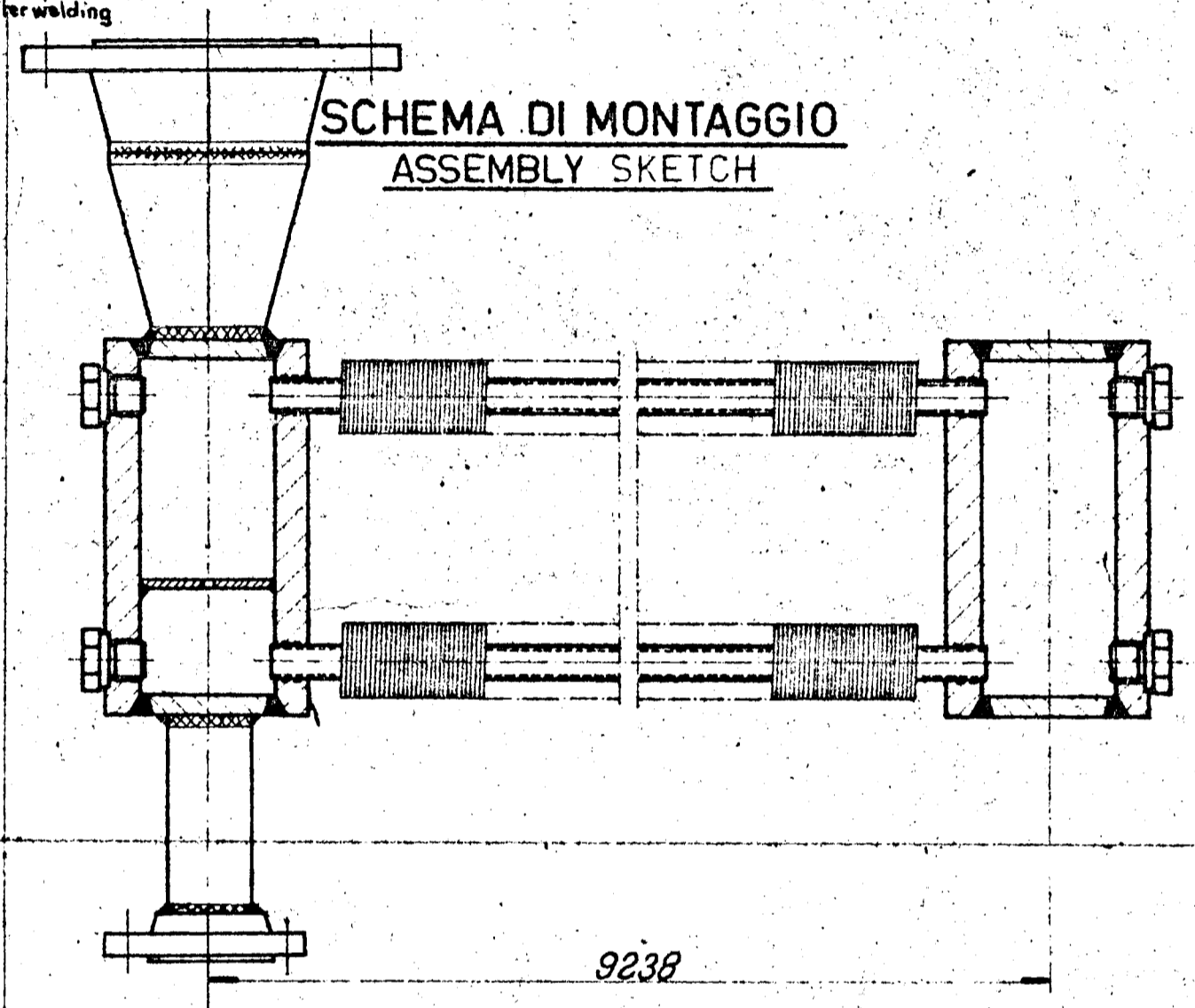
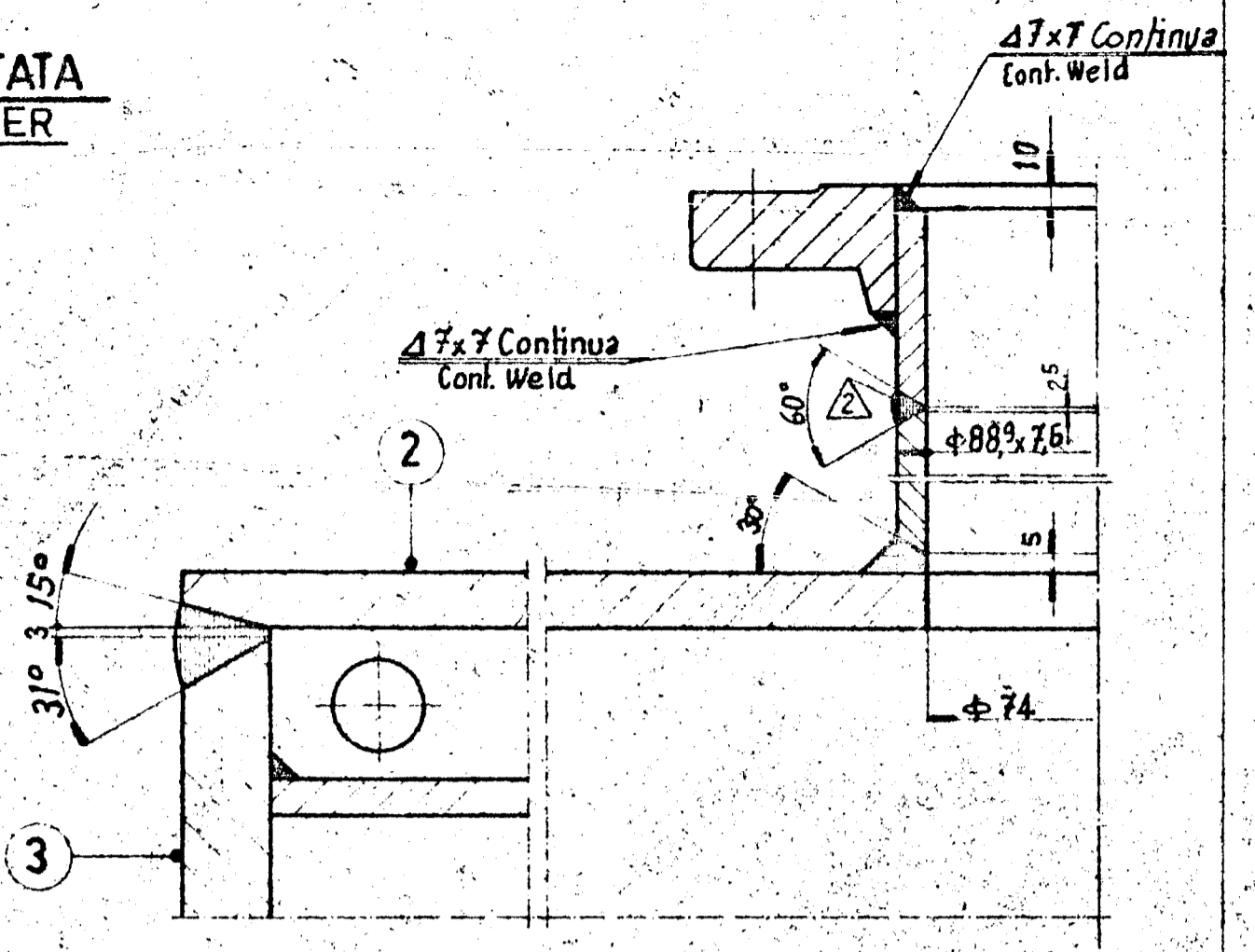
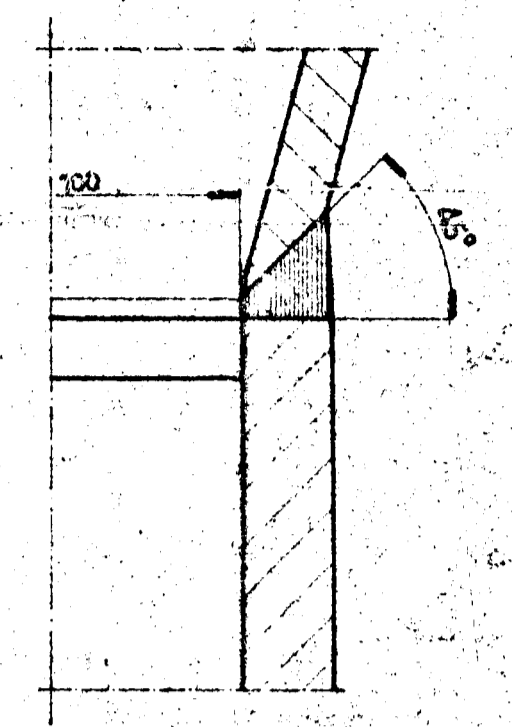
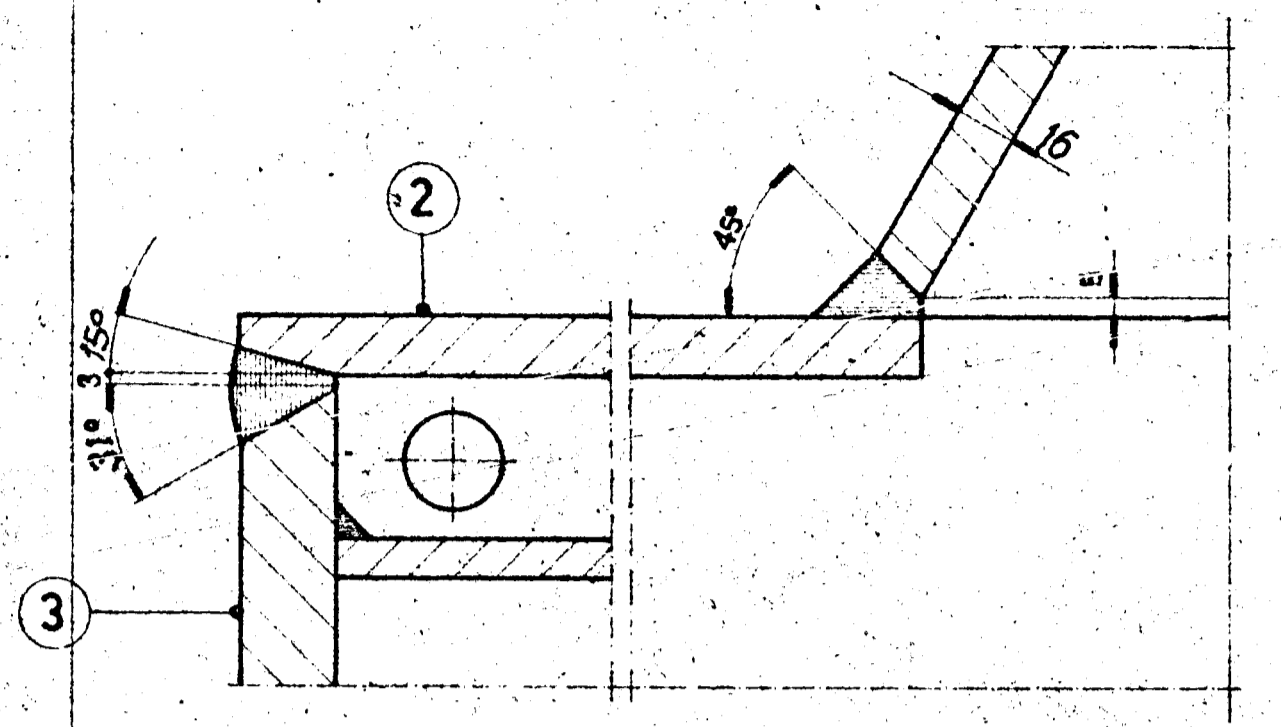
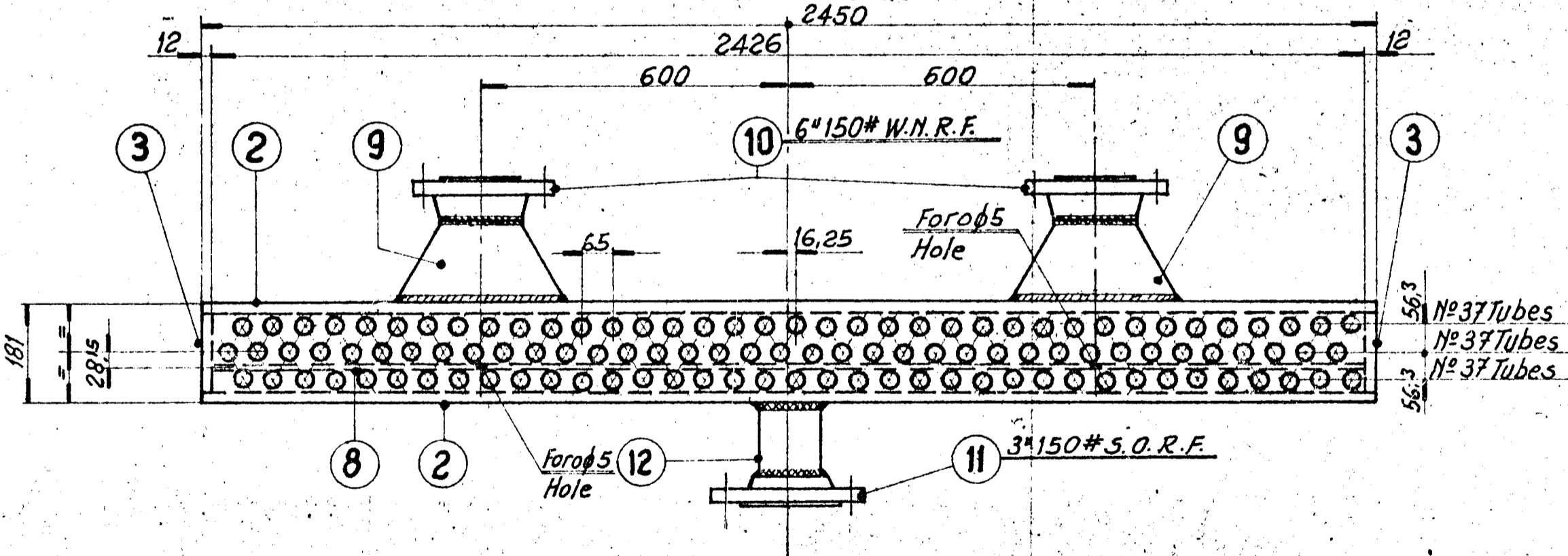


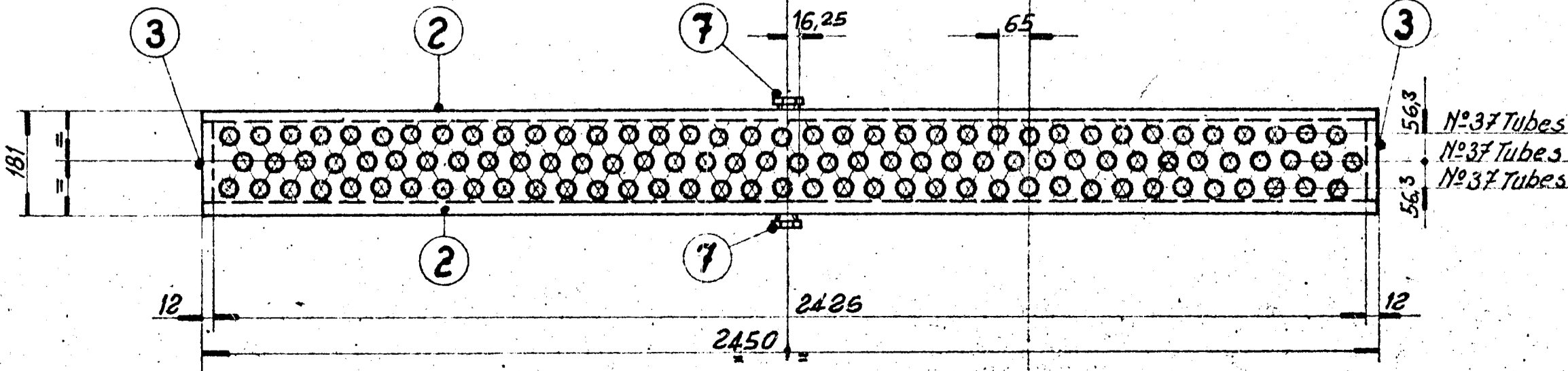
**ATTACCO TRONCHETTI ALLA TESTATA**  
ATTACHMENT PIPE NOZZLES TO HEADER



**CASSA 'A' - RICHIESTE N° 4**  
HEADER REQUIRED



**TESTATE VISTE LATO TAPPI**  
HEADERS VIEWING PLUG SHEET SIDE



**CASSA 'B' - RICHIESTE N° 4**  
HEADER REQUIRED

**CONDIZIONI GENERALI DI PROGETTO**  
General design data

SIGLA APPARECCHIO	<b>02-E7</b>	
SERVIZIO	<b>Splitter Condenser</b>	
PRESSIONE DI ESERCIZIO	14 Kg/cm <sup>2</sup>	
Operating pressure	197 PSIG	
PRESSIONE DI PROGETTO	35 Kg/cm <sup>2</sup>	
Design pressure	50 PSIG	
PRESSIONE DI PROVA	53 Kg/cm <sup>2</sup>	
Test pressure	75 PSIG	
TEMPERATURA DI PROGETTO	121 °C	
Design temperature	250 °F	
CODICE	ASME	COLLAUDO, SMAN. & SOVV.
Code requirement	ASME	Stamp: / /
RICOTTURA	SI	REF. 100
Stress relieving	SI	A. TRATTI
RADIOGRAFIA	SI	REF. 100
X ray examination	SI	REF. 100
SOVRASPESORE DI CORROSIONE	3.2	
Corrosion allowance	1/8"	
NUMERO DI TUBI	111	
Number of tubes	111	
NUMERO DI FILE	3	
Number of rows	3	
NUMERO DI PASSAGGI	2	
Number of passes	2	
NUMERO DI TUBI PER PASSAGGIO		
Number of tubes per pass		
1° PASSAGGIO	74	5° PASSAGGIO
1st pass	74	5th pass
2° PASSAGGIO	37	6° PASSAGGIO
2nd pass	37	6th pass
3° PASSAGGIO	-	7° PASSAGGIO
3rd pass	-	7th pass
4° PASSAGGIO	-	8° PASSAGGIO
4th pass	-	8th pass
TUBI		
Tubes		
MATERIALE	ASTM A 179 B 221-60G16	
Material	ASTM A 179 B 221-60G16	
DIMENSIONI	26.4 x 2.76 5p Media L=3144	
Dimensions	D.D. N. 128 W.G. A.W. L=30'	
ALETTE	ALLUMINIO POLUCE 457ESTRUSE	
Fins	Aluminum 4 inch 457" Extruded	
PASSO	65 TRIANGOLARE	
Pitch	2 1/2" Triangular	

**APPROVED FOR CONSTRUCTION**

5-6-68

TECN. DEPT.

COMMESSA 27200

D.S. 202. 11° 02-RH-B-22561

NOTE	HEADER	Box	MATERIAL	UPDATED	TS	ASTM A 516 Gr 70
14	TARGA SHAH	Placard	R101578	4	Bronze	
13	TARGA HZ	Placard	R100432	4	Bronze	
12	TRONCHETTO	Nozzle		4	ASTM A 106 B	Tubo 80.3 x 7.6 L=185
11	FLANGIA	Flange	1545/58	4	ASTM A 105 I	3" 150# S.O.R.F. Rig. 6/
10	FLANGIA	Flange	1555/62	8	ASTM A 105 I	6" 150# W.N.R.F. B-136 Rig. 6/
9	TRONCHETTO	Nozzle neck	Tab. N° 31	8	ASTM A 106 B	6"
8	SETTO	Partition		4	ASTM A 2018 FBG	Thk 10 94 x 242
7	TAPPO	Plug	N405/5	8	ASTM A 1051	3/4" ASA B21
6	TUBO ALETTATO	Fin tube	R 101220444	111	ASTM A 179/ASTM B 221-60G16	
5	TAPPO	Plug	R 100 824588	111	ASTM A 105 I	1 1/2" 12UNF C.A.M.
4	GUARNIZIONE	Gasket	R 100 009868	111	ARMCO	
3	PIASTRA LATERALE	End sheet		16	ASTM A 2018 FBG	Thk = 12 94 x 151
2	PIASTRA SUP. E INF.	Top & bottom sheet		16	ASTM A 2018 FBG	Thk = 12 94 x 245
1	PIASTRA TUBI/TAPPI	Tubes & plugs sheet		16	ASTM A 2018 FBG	Thk = 3/8 181 x 245

**SNAM-PROGETTI FOR CEYLON PETROC. CORP.**

ORDER N°: PROG 27200/CPC 44 DATED: 2 August 1967

PLANT N°: 02

PLANT LOCATION: COLOMBO-CEYLON

Completivo

DISPOSIZIONE APPAREC: GENERAL ARRANGEMENT H148-21

Dataggio: SCAMBIAITORE - SOLO AIRE TESTATE - HEADERS ITEM: 02-E7

ricevuto da:

**HUDSON ITALIANA** 1071+ 1074 N° FABRICA H 148

S. p. A.

1071+ 1074 N° FABRICA H 148

modif. STD. N° bis I.S.