

CT HANGLED	FUEL
EMP. OF PRODUCT	90 °C
TEMP. OF PRODUCT	20 °C
WORKING PRESSURE	6.83 BAR
TEST PRESSURE	8.53 BAR
WEIGHT OF ARM	165 KG
T LOAD AT RISER	324 MKG
TYPE OF RISER	N° 7
MANUFACTURER	WITON

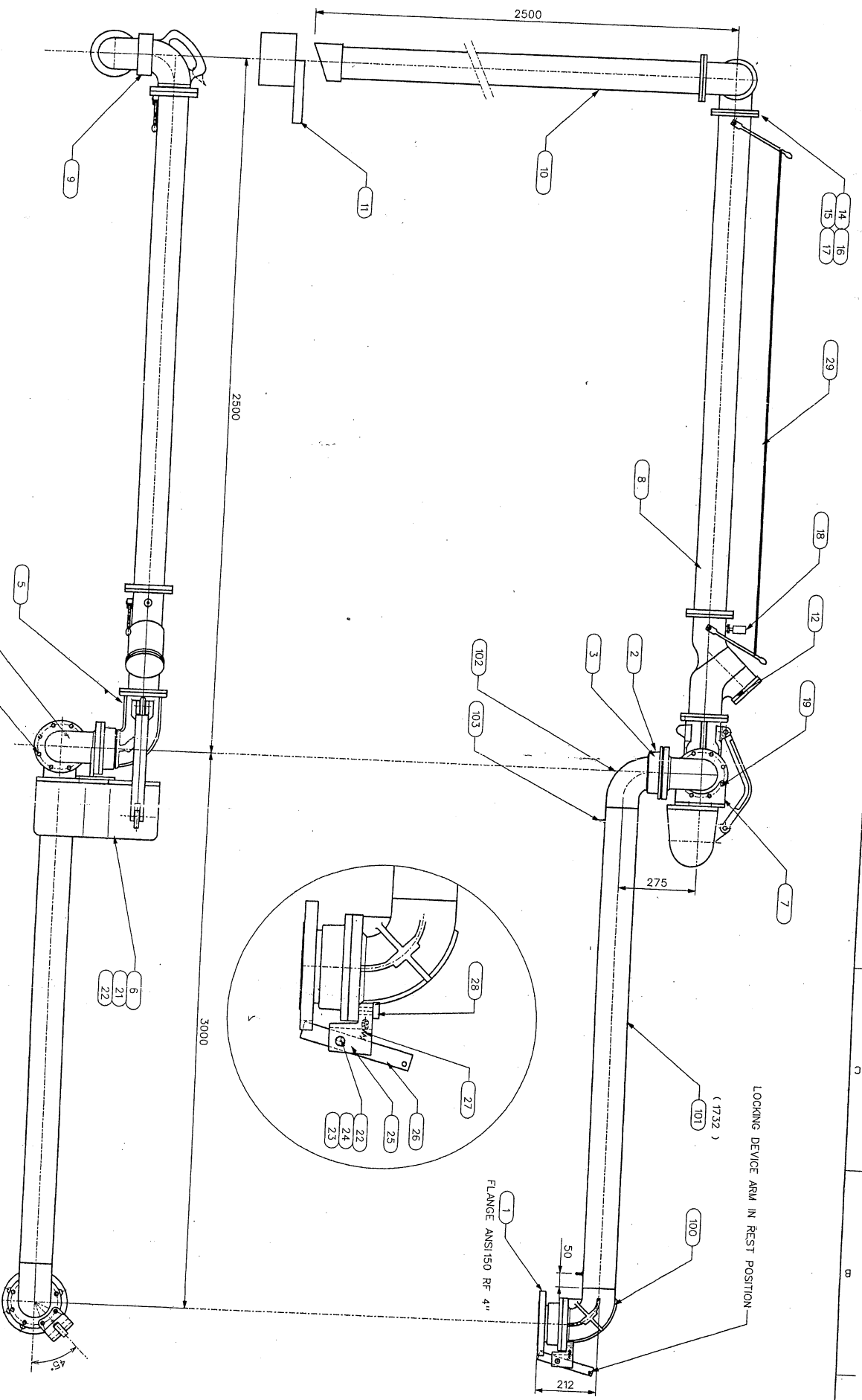
DATE	REVISION	HEIGHT
SCALE	DATE	
DRAWN	DATE	
CHECKED	DATE	
DESIGNED	DATE	

ARM TYPE S374V 4" PNG  
 LG : 2000 x 2500 x 1500

WELDING	FOR INFORMATION	FOR MANUFACTURING	FINAL APPROVAL
WELDER			
INSPECTOR			
MANUFACTURER			

FMC  
 FINE CHEMICALS  
 11050 9815435

1



PRODUCT HANDLED	: DIESEL / KEROSENE
MAX. TEMP. OF PRODUCT	: 60 °C
MIN. TEMP. OF PRODUCT	: 20 °C
MAX. WORKING PRESSURE	: 4,54 BAR/4,85 BAR
- PRESSURE	: 8,28 BAR
WGT OF ARM	: 160 KG
MOMENT LOAD AT RISER	: 400 MKG
GREASE	: N° 7
PACKING	: VITON

2

DATE:	09/07/98	WEIGHT:	
SCALE:	1		
NO	DESCRIPTION	REVISION	DATE
1	DESIGN IN ACCORDANCE WITH CUSTOMER COMMENT		
2	MODIF. N° 003441		

FOR INFORMATION   
 FOR MANUFACTURING   
 FINAL APPROVAL

**ARM TYPE S374V 4" PND**  
**LG : 3000 x 2500 x 2500**

**FMC**

INCHING SYSTEMS  
 10000 ROUTE 100  
 WILSONVILLE, OR 97150-3000  
 TEL: 503/638-1000 FAX: 503/638-1001