



SCALE 1 : 200

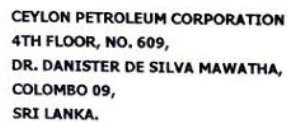
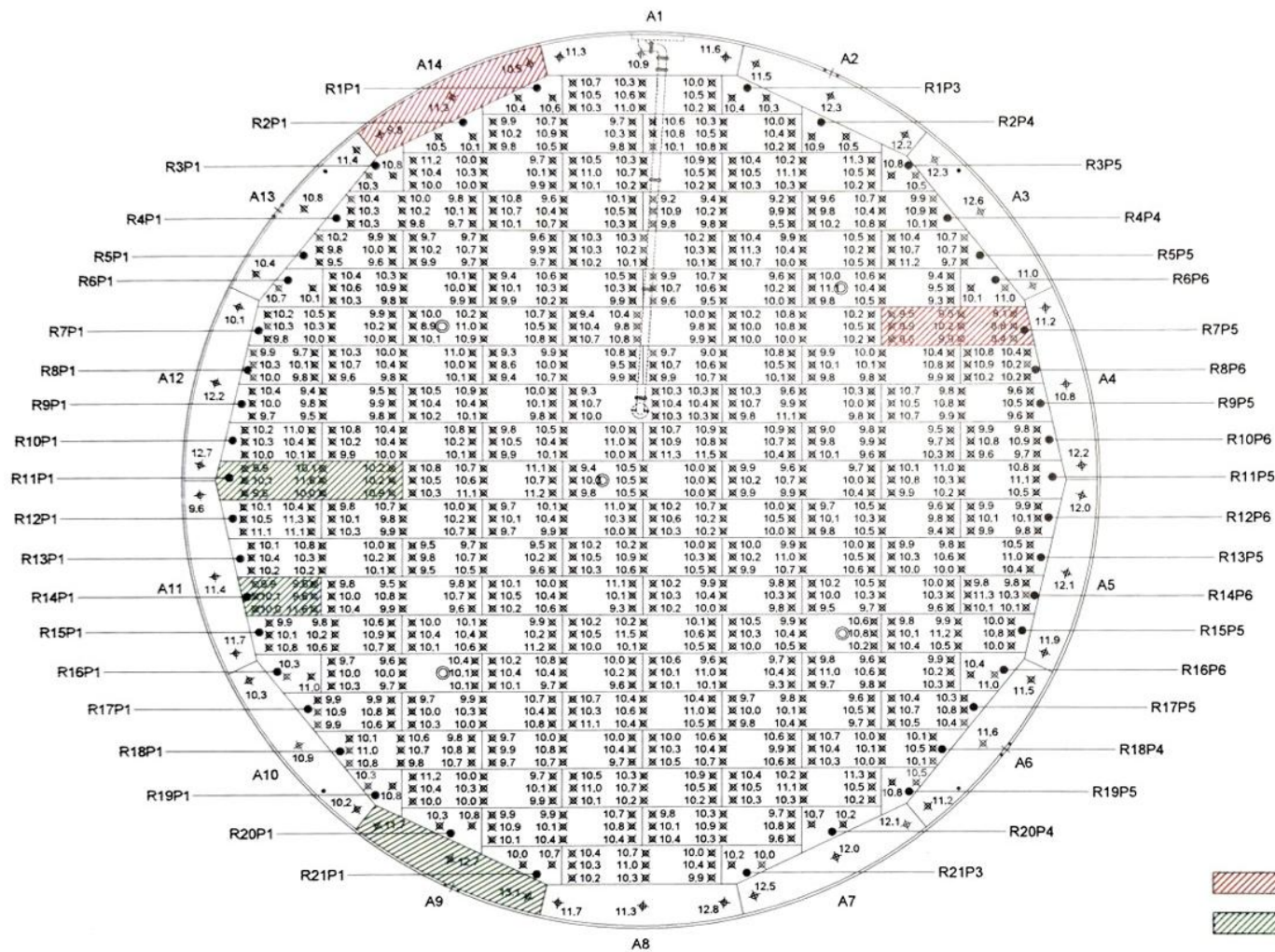


Plate thickness of the Roof plates
Drawing No : CPC_TK38_Bottom_T



TANK FLOOR THICKNESS SURVEY RESULTS - 2024

SCALE 1 : 200

Annular Plate No.	Plate Thickness		
A2	11.3	11.0	11.2
	11.1	11.0	11.1
	10.9	10.8	11.3
A5	12.1	11.5	11.8
	11.1	11.4	11.2
	11.1	11.3	10.9
A6	11.3	11.2	11.0
	10.9	11.0	11.0
	10.6	11.1	10.6
A8	11.0	11.4	11.3
	11.1	11.0	10.9
	11.3	11.4	11.0
A11	11.3	10.9	10.7
	11.1	11.5	10.8
	10.9	11.5	11.2
A14	10.8	11.2	11.1
	11.2	11.4	10.9
	10.9	11.0	10.7

ANNULAR PLATE SCANNING SURVEY RESULTS - 2024

SCALE : NTS

Plates of low thickness  
Plates of Highest thickness



CEYLON PETROLEUM CORPORATION  
4TH FLOOR, NO. 609,  
DR. DANISTER DE SILVA MAWATHA,  
COLOMBO 09,  
SRI LANKA.

Plate thickness of the Bottom plates

Drawing No : CPC\_TK38\_Bottom\_T